

For Sale

By embracing the absurdity of overconsumption, we turn discarded waste into bold, satirical designs. Our work critiques the fleeting value systems of capitalism, offering a new, irreverent relationship to objects.



WHITE
NOISE
DADA

WHITENOISEDADA is a multi-disciplinary design studio founded by Klaas Kuiken and Charley Reijnders. We explore the absurdities of modern life, satirically examining the capitalist system and human behavior. Using bold colors, alienating forms, and a generous pinch of salt, we aim to create unique design objects that challenge the status quo and ignite the imagination. Explore our collection of daring and thought-provoking designs, each with a story and a critical view of the world. Looking for something special? We also create custom designs, blending our creative vision and technical skills to meet your needs. Or maybe you want us to help you break free from the constraints of the norm? We're always open to interdisciplinary collaborations—or just a coffee.

www.whitenoisedada.com
[instagram](#)

P. 4 ART PLANT

P. 8 JOHNNY COUCH

P. 9 THE LOAD

P. 10 ORDER NOW

P. 11 ROTZAK

P. 12 SHUTTER LAMP

P. 13 THE UNNAMABLE

P. 14 PROMETHEUS

P. 15 MR. & MRS. JONES

P. 18 AIDA

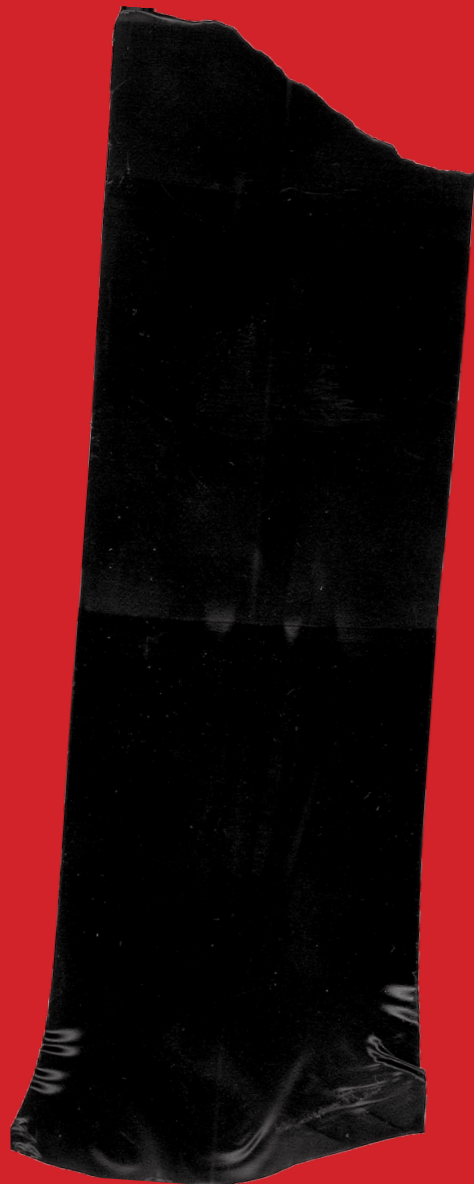
P. 19 MING

P. 20 NIGHTCRAWLERS

P. 21 BLING

P. 22 THE NEW ORDER

P. 24 ASSIGNMENTS/PROJECTS

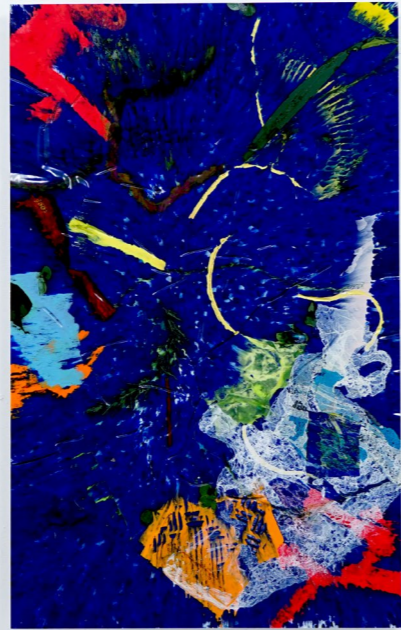




Price €900 - €2500 various per size (special DDW price)
 Material 100% plastic waste
 Size variable

ART PLANT is created from discarded artificial plants, salvaged from thrift store trash. These damaged or discolored pieces are arranged into a 17th-century-style bouquet, set on a base of re-cycled plastic. The entire piece is then pressed and heated into a solid panel. Art Plant plays with the absurdity of Western value systems, turning waste into a vibrant design that challenges conventional aesthetics.







JOHNNY COUCH is a uniquely comfortable sofa that reinterprets luxury through unexpected materials. Built from reclaimed wood, its structure is covered with adhesive marble pieces, giving it the illusion of being solid marble. The cushions are made from old embroidered mattresses that shows the often overlooked beauty and craftsmanship of the mattress. This design challenges traditional ideas of aesthetics and materials and plays with the feel of comfort and style.

on request at Rossana Orlandi
 plastic marble, recycled mattresses, wood
 L225 x W90 x H100 cm

Price
 Material
 Size



THE LOAD is a cabinet made of ash wood and covered with plastic bags from well-known mainly Dutch brands. The donated clothes to the thrift shop often come in these plastic bags and are challenging too recycle. By integrating these discarded materials into a functional object. The Load highlights the absurdity of throwaway culture, turning overlooked waste into something purposeful and meaningful.

€ 4500
 Ashwood, used plastic bags

Price
 Material





Price € 2850
Material steel, epoxy, led



ORDER NOW! takes inspiration from the fading tradition of local advertising signs once prevalent in city streets. As global brands like Starbucks dominate, these unique ads have become rare, evoking nostalgia. This lamp is a tribute to small businesses and embraces the aesthetics of imperfec-tion, offering a critique of mass-market uniformity.



€ 150
MDF, Acrylics, plastic bag

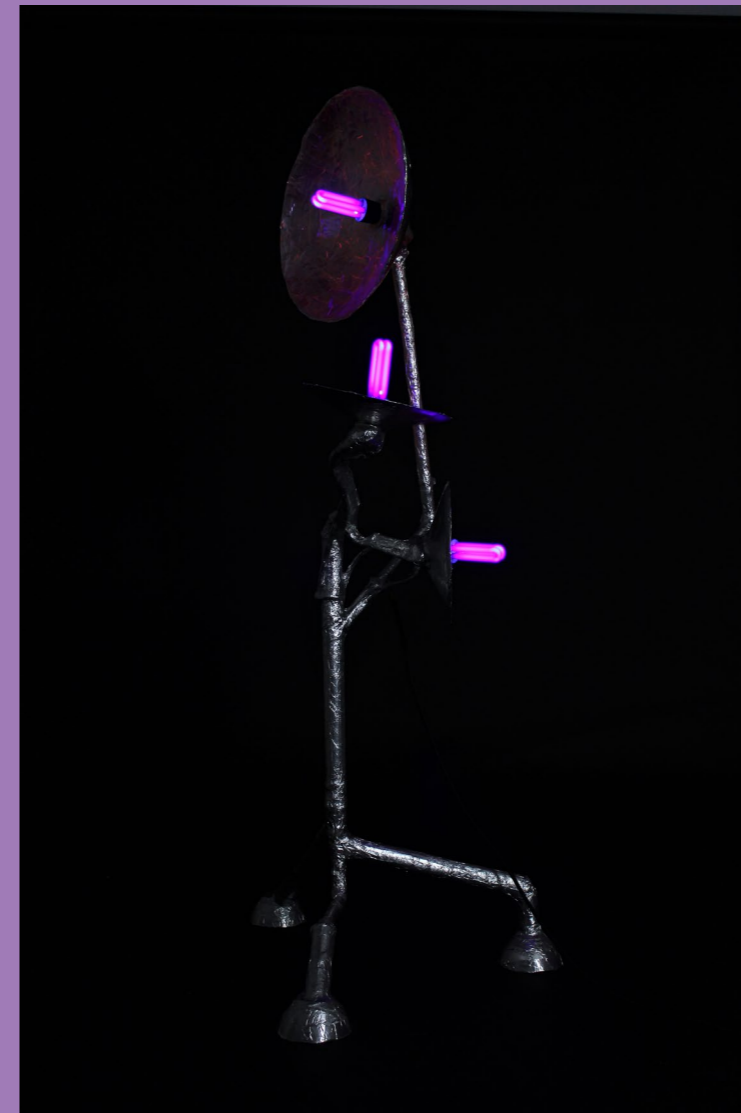
Price
Material

ROTZAK (dushbag) is a playful series of bags, each named with the Dutch word “zak” (bag), yet with meanings unrelated to the object itself. The word and color of each bag are customizable, inviting users to re-think associations and explore the humor in everyday language and design.



THE SHUTTER LAMP is inspired by the striped shadows cast through shutters by streetlights, evoking a film-noir atmosphere. Made from black MDF with a marble-like finish, it uses LED lights to create a mysterious, cinematic effect, adding an eerie elegance reminiscent to 19th century luxurious design.

Price € 750
Material mdf, led, pom



THE UNNAMABLE is an abstract sculpture that transforms the environment with a glowing purple light. Its form remains undefined, inviting the viewer's imagination to give it meaning. This piece explores the mysteries of the unknown, the unnamable, a noumenon.



Price € 3500
Material steel, aluminum tape, plaster, blacklight paint

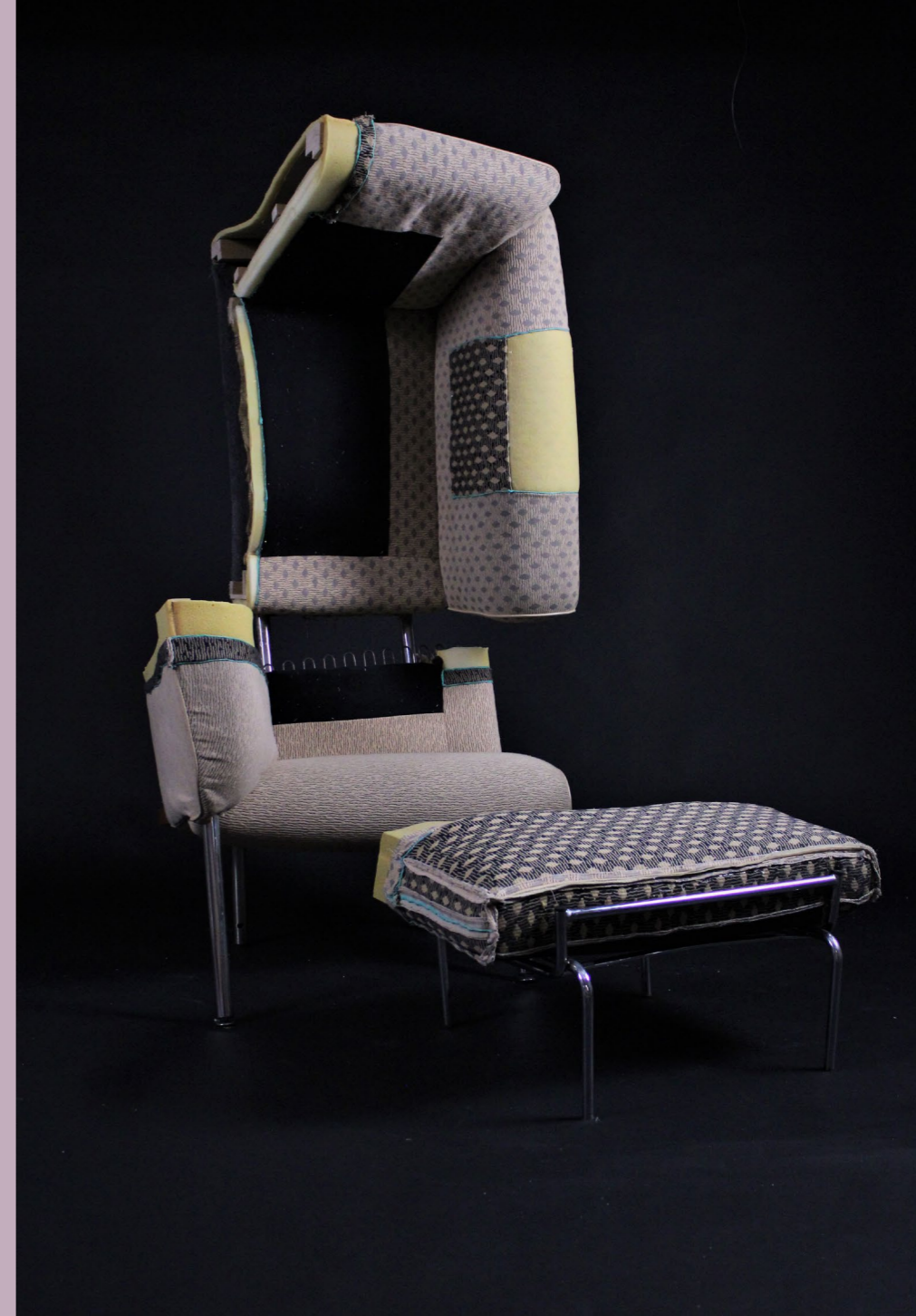




Price
Material

€ 2000
foam, old mattresses, pur, oil drums

PROMETHEUS is a sculptural pillar that juxtaposes the classical elegance of ancient forms with modern, industrial waste materials. Once a symbol of grandeur, the familiar pillar is now reimagined through discarded elements, challenging traditional ideas of value and beauty.



Price
Material

€ 20.000
deconstructed couch

MR & MRS JONES These chairs are made from discarded old sofa's and lazy chairs, however they have been the witness of a household for years. Mr. Jones brings a sense of classic sophistication, with fabrics and details that evoke a nostalgic, reflective mood. Perfect for those seeking quiet contemplation.



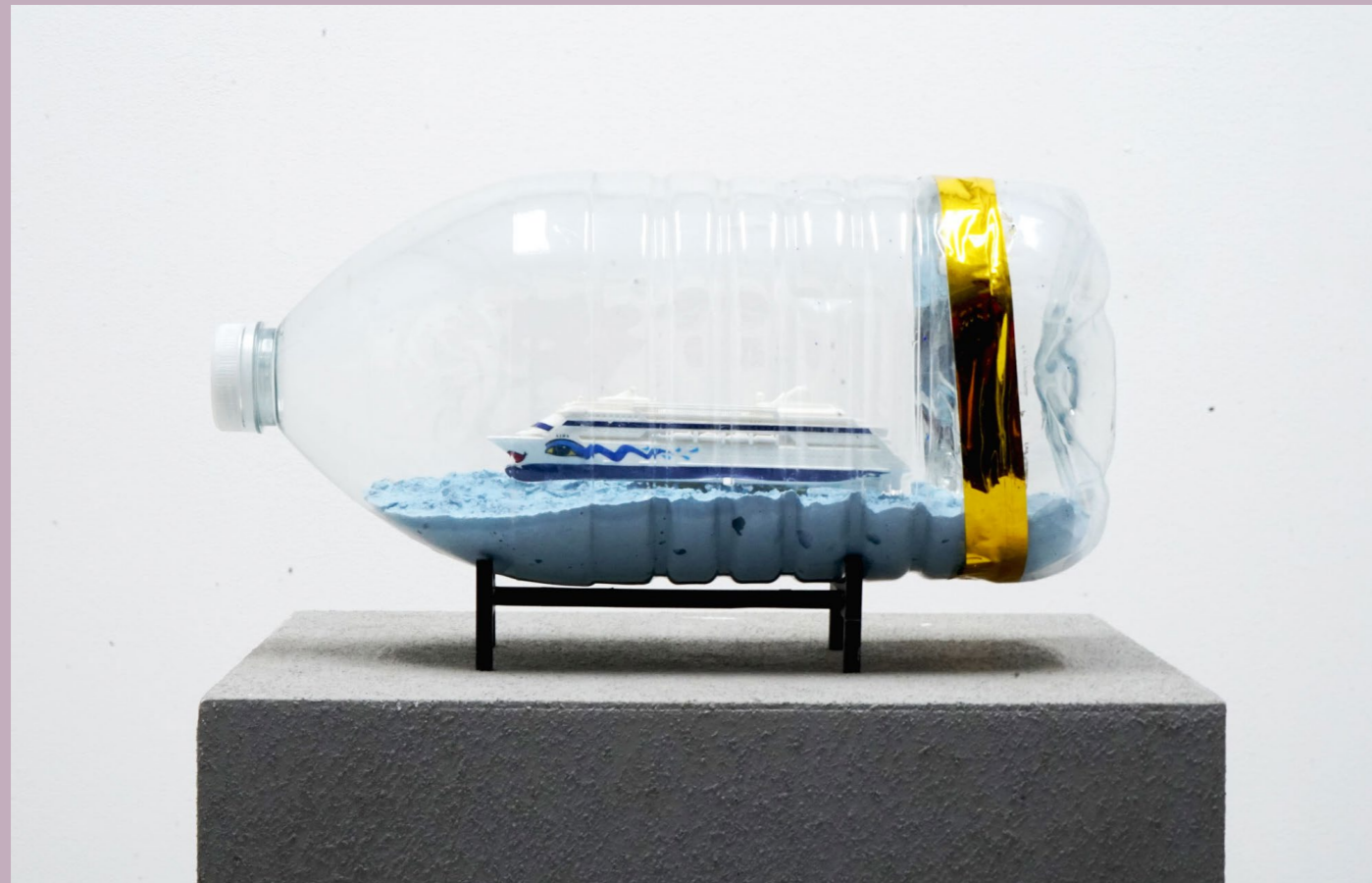
MS JONES on the other hand, invites warmth and openness, encouraging vulnerability and conversation. Together, they offer a blend of old-world charm and modern design. The design contemplates on our relationship with the objects surrounding us.



Price € 5500
Material gold plated, plaster, styrofoam, aluminum, woodfibres



BILLY is a light fixture designed to cast a soft glow over Mr. and Mrs. Jones, subtly revealing the un-spoken tension between them. Its mysterious light brings out hidden emotions and truths, creating a poetic interplay of shadow and illumination.



AIDA critiques the environmental impact of cruise ships, which pollute cities like Amsterdam and Rotterdam. The design encases a model of a cruise ship inside a giant PET water bottle, symbolizing its wastefulness and making a powerful statement about mass tourism and its destructive effects.

Price € 220
 Material PET bottle, AIDA
 miniature, steel, plaster



Price €1750
 Material recycled plastic, hot glue
 Size 35L x 35W x 70H cm



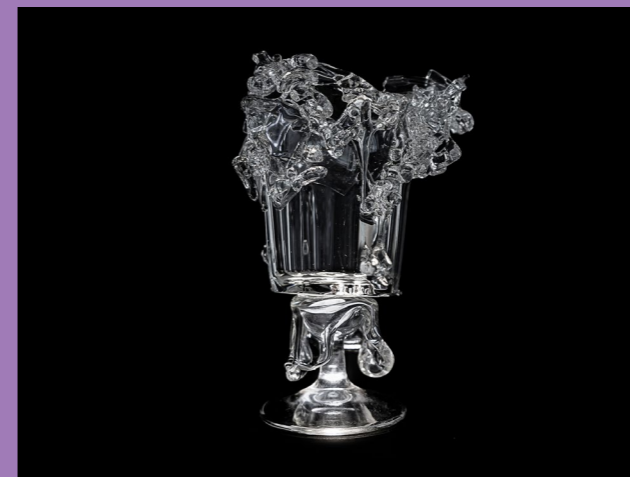
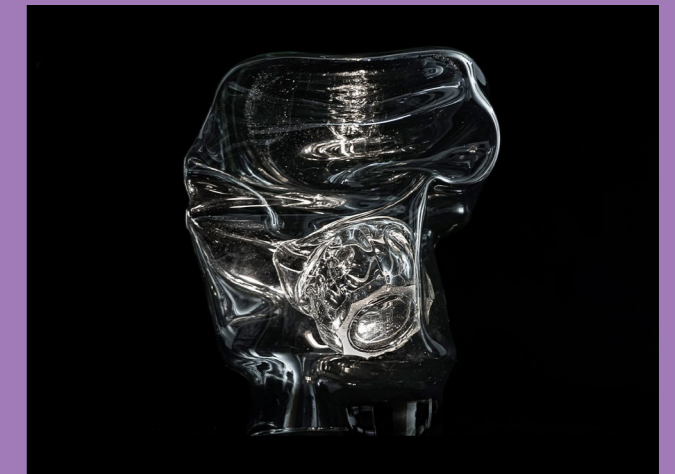
MING reimagines the iconic Ming vase by crafting modern versions from plastic waste. Inspired by fragments of rare Ming ceramics, these vases transform discarded materials into something valuable. This design challenges the concept of value, elevating overlooked objects into prized possessions with a long-lasting tradition.





NIGHTCRAWLERS are multifunctional floor objects made from soft, durable fabrics. Their industrial-inspired shapes are modular, allowing them to be used as loungers, supports, or even side tables. Their versatile design encourages creativity and interaction, offering endless possibilities.

looking for collaborations / a producer of the pieces.



Price €1500 a piece (glass bases)
Material glass, aluminium

BLING takes the everyday Duralex glass and transforms it into a unique statement piece. Each glass is subtly modified, giving it its own personality and turning an ordinary object into something personal. Bling redefines simplicity, proving that even the most mundane items can tell a story.



€ 1750 per piece
looking for a label/ collaboration

Price

NEW ORDER is a striking lamp featuring beams of light rising like columns, creating a stately yet modern appearance. The first in a collection exploring the political implications of dictatorial design, this piece questions power structures and creates a dialogue between authority, politics, and design. The base is crafted from HDF, while the columns are made of acrylic with LED lights.



WE NEED was our design for an Open Call by Ontwerpers Platform Arnhem and Alliander to beautify electrical cabinets. Our submission, “We Need Watt?”, was chosen for 7 installations in Arnhem’s Spijkerbuurt. The cabinets question what’s truly needed for the energy transition, in-spired by our research into hydrogen’s complexities, highlighting the nuanced challenges of the energy landscape.

DE EEUWIGE FRIKANDEL is a short film made for Fashion Design Festival Arnhem, focusing on consumption. The film shows the preparation of a frikandel speciaal, which is passed through a hatch to someone in the next room. After consumption, the story unfolds humorously, offering a satirical look at modern consumer habits.

AFRIKA ARTS KOLLECTIVE X WND In January 2024, we were invited by the Africa Arts Kollektive to Kampala, Uganda, to conduct a design workshop with local artisans from AAK. These artisans work with imported waste glass but face challenges in recycling it locally. AAK has established an Art Community Center in the Kyebando slum, training residents in glassblowing. Over three weeks, we collaborated closely with artisans to design marketable souvenirs and visualize their personal stories, blending traditional techniques with contemporary flair. This project is made possible by Stichting DOEN.



Price
 €300 per piece with a plate
 €200 for the small ones
 Money goes to the project in Uganda



THE WALL FOR MEETING ROOM HOTEL PIET HEIN EEK For Piet Hein Eek's new hotel, we designed an acoustic wall made from repurposed mattress foam, treated with UV-resistant acrylic paint. The wall's stone-like appearance is soft to the touch, and the pastel colors create a calming yet playful effect. Beyond its aesthetic appeal, the wall also hides a secret door to an adjacent space.

THE TRANSITION LAMP was an assignment to tell the story of the energy transition. Inspired by the Tesla Coil, this lamp resembles a technical space object, frozen in motion. With strobe lights, lasers, and colored LEDs, the lamp embodies electric speed and energy, frozen in time, symbolizing the evolving

